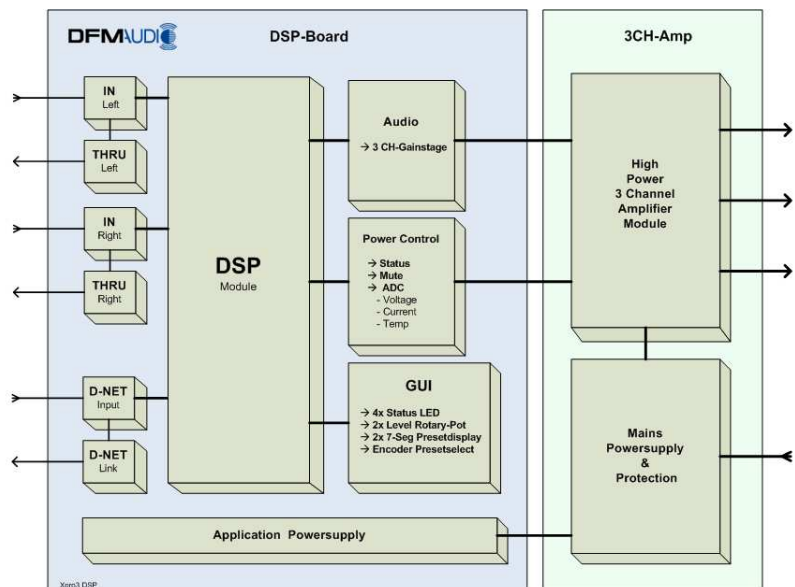


3 channel loud-speakers amplifier module with DSP functionality

The DFM XPro3 DSP amplifier module allows you direct activation of already existing or new professional loud-speakers design. It is equipped with all necessary in- and outputs, a net workable communication interface and operating elements for direct selection of desirable pre-sets and level setting. Our device offers the most modern D-class technology of 3rd generation and supplies you with weight-efficient switching network technology. Due to its high output power of 1 x 2000 W and 2 x 800 W you can not only control big Sub-/Sat systems but also mange them via efficient DSP architecture. The outstanding audio parameters as a result guarantee your satisfaction in the most demanding applications. Several models can be arranging in Meta data network via serial Bus-System with compatible NET Control PC software and be managed in real time, which allows you to cover even the most complex application. Above all this Above all the device supplemented by storable pre-sets, real time-limiter and loud-speakers fault monitoring. The robust all-metal housing with its compact external detentions will complement all professional application in any rough environments.

Block diagram:



Short description:

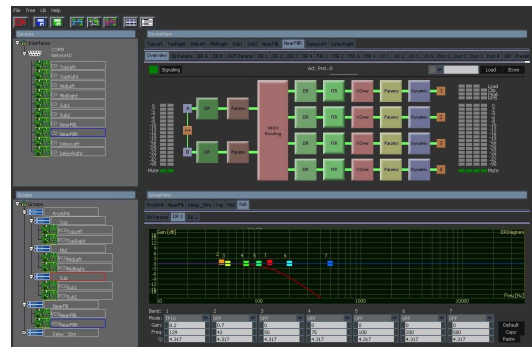
Very capable and network enabled amplifier module with 2 symmetrical inputs and 3 loud-speaker outputs whereby the 2 via Speaker Sat channel connections placed on the front cover. The RS485 interface allows the remote controlling and parameterizing of 24 presets.

Due to two selectable potentiometer you can adjust the sub-channel level. You can also choose one of the 24 presets with the help of robust encoder which are optically shown on 7 segmentation display.

The wide range power supplies which are supplied via Powercon connector allows very secure Current supply for the every day professional use.

PC – Software:

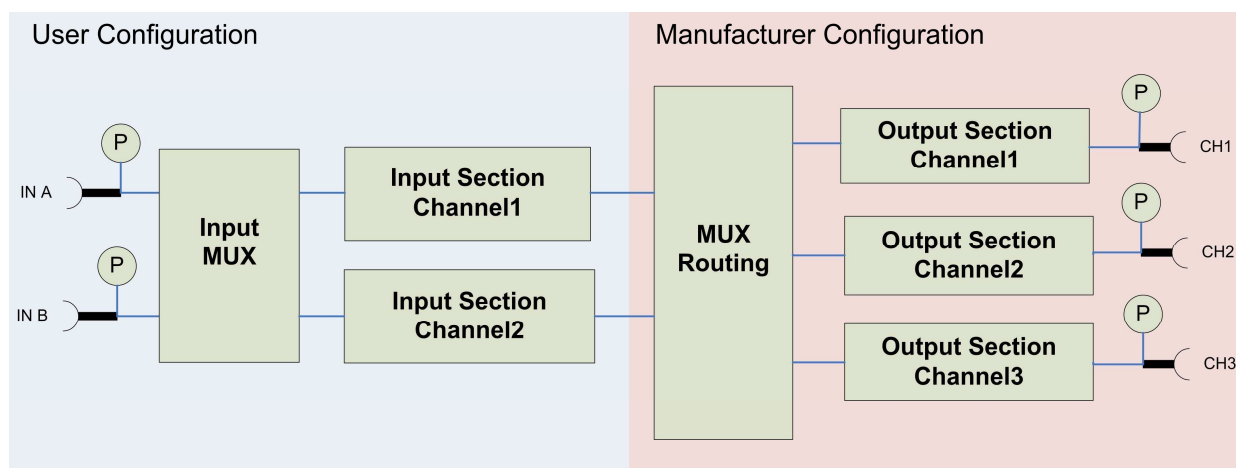
With teh NET-Control PC Software you can connect up to 30 amplifiers which can be remote operated at the real-time point. With the help of said software you can store up to 24 pre-sets. Also it allows you to get very important details like quick level meter or impedance control of connected loud-speakers.



Features:

- 2 symmetrical XLR-inputs with XLR-Thru-outputs
- Very high capable (0,58W/cm³) with 3600 W Peak Power (1x 2000W / 2x 800W an 4Ω)
- High efficiency DSP-Performance with internal sampling rate of 96kHz und 32Bit floating point technology
- Real time measurements of power amplifier with impedance controller on temperature, current and voltage
- Real-time limiter with loud-speakers monitoring
- 2 potentiometer for Sub- and main loudspeakers
- 24 storable presets which can be selected on the display with the help of encoder.
- Communication via bus serial network capable RS485-Interface
- Ethernet connection (optional)

Block schematic diagram DSP-Core:



Input (User Configuration)

- Settable inputs level and Mute function
- Settable 15 EQ (IIR) filter, frequency, GAIN and quality
- Eingangs- Delay bis zu 100ms

Output (Manufacturer Configuration)

- Settable output level
- 2 Crossover- Filter (bis 8. Ordnung)
- Flexible routing with additional Addition/Subtraction
- Settable 10 EQ filter, frequency, GAIN and quality
- Up to 30 ms delay
- Invertible phase
- RMS Limiter, Threshold/Attack/Release also settable
- Peak Limiter, Threshold/Attack/Release einstellbar

Applications:

- Remotegesteuerte, integrierte Audiocontroller für aktive mittlere und große Beschallungssysteme
- Komplexe und steuerbare aktive Frequenzweichen für Mehrwegesysteme
- Fernbedienbare Anpassung von mehrkanaligen, fest installierten Audioübertragungssystemen

Technical data:

Analoge inputs	2 analogue inputs, symmetrical XLR
Analogue inputs level	+ dBV@-9dB+15 dBu for full scale level
Input impedance differentially:	20 kOhm
Performance by4 / 8 Ω:	2000/1550 W @ 1% THD+N 1 kHz (AES17 Filter)
Performance CH2 + CH3 bei 4 / 8 Ω:	800/ 400W @ 1% THD+N 1 kHz (AES17 Filter)
By current total +4dBV / 1 kHz:	72dB/ 0, 03 % @ 8 Ω
Dynamic range	
DR bei -60dB / 1 kHz:	-104 dB
Signal-to noise ratio	118dBA
Level differences	(20 Hz – 20 kHz): ±0,2 dB / ±0,5 dB

General information

Power supply	95 – 240 V AC overr Powercon™ connector
Interface connection	RS485 as EtherCon™ / RJ45 connector
AnalogeTHRU- output:	2 channels directly connected thru, symmetrical XLR
External dementions (BxTxH):	188 x 112 x 460 mm
Built in dementions (BxTxH)	157 x 83 x 431mm
Weight:	5,90 kg